

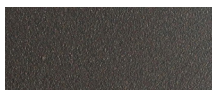


HARBOUR

# Hamilton

HAMI-06CL 2 SEAT 1 ARM LEFT

## FRAME



Powdercoat - Asteroid

## CUSHION



Sunbrella - Cast Slate

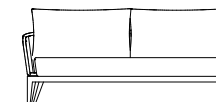
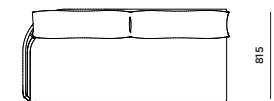
## ACCENT



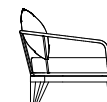
Olephin Rope



PROTECTIVE COVER



1760  
69.2"



645  
25.4"  
Arm Height: 550mm / 21.7"  
Seat Height: 400mm / 15.8"



## DESCRIPTION:

Tree-top living meets luxury in this range inspired by the lush environment of Hamilton Island, Australia. The fresh-feel collection makes use of rope olephin on the arms, combined with Harbour's signature powder-coated frame. With a comely clean design in mind, it keeps the intention clear, to brighten and lighten any space this sculptural piece will inhabit. This airy, vertical silhouette series is ready to elevate any natural sanctuary.

## PROTECTIVE COVERS:

Protect your investment with water-repellent Sea-Sprae® fabric; protective backside coating, UV resistant.

## SHIPPING AND DELIVERY:

Stock frames and stock cushions delivered in 1-3 weeks.  
Stock frames with COM cushions delivered in 3-6 weeks.  
Custom Orders delivered in 10-14 weeks.

## WARRANTY:

FRAMES: 5 limited warranty on structural integrity.  
MATERIALS: 2 year limited warranty.

## TECHNICAL INFORMATION

**POWDER COATED ALUMINIUM:**  
Asko Nobel® handcrafted, powder coated, rust-proof aluminium frame, reinforced signature connection points.

**SUNBRELLA®:**  
Solution-dyed, acrylic fiber, UV, water, and mold resistant outdoor fabric.

**OLEFIN ROPE:**  
A strong synthetic quick dry fiber. Stain, mildew and sun resistant.