

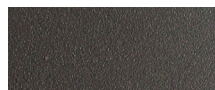


HARBOUR

# Victoria Alu

VICT-01B DINING SIDE CHAIR

## FRAME



Powdercoat - Asteroid

## CUSHION



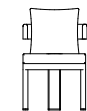
Sunbrella - Cast Slate



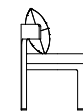
## PROTECTIVE COVER



580  
22.8"



510  
20"



690  
27.1"

Arm Height: 690mm / 27.1"  
Seat Height: 450mm / 17.7"



## DESCRIPTION:

Tree-top living meets luxury in this range inspired by the lush environment of Hamilton Island, Australia. The fresh-feel collection makes use of rope olephin on the arms, combined with Harbour's signature powder-coated frame. With a comely clean design in mind, it keeps the intention clear, to brighten and lighten any space this sculptural piece will inhabit. This airy, vertical silhouette series is ready to elevate any natural sanctuary.

## PROTECTIVE COVERS:

Protect your investment with water-repellent Sea-Sprae® fabric; protective backside coating, UV resistant.

## SHIPPING AND DELIVERY:

Stock frames and stock cushions delivered in 1-3 weeks.  
Stock frames with COM cushions delivered in 3-6 weeks.  
Custom Orders delivered in 10-14 weeks.

## WARRANTY:

FRAMES: 5 limited warranty on structural integrity.  
MATERIALS: 2 year limited warranty.

## TECHNICAL INFORMATION

### POWDER COATED ALUMINIUM:

Asko Nobel® handcrafted, powder coated, rust-proof aluminium Frame, reinforced signature connection points.

### SUNBRELLA®:

Solution-dyed, acrylic fiber, UV, water, and mold resistant outdoor fabric.

### TRAVERTINE:

A sedimentary type of limestone that has been subjected to intense heat and pressure. Sealed